



R.M. JONES Newsletter

FARMCENTRES

www.rmjones.com

January 2025

Did you know 38% of Lambing Deaths are due to Infections*

Vaccine Supply Issues:

Heptavac P is very short again this year. Please talk to us about options for your flock to ensure Clostridial disease protection

Prebiotics

Prebiotics are designed to feed the beneficial bacteria present in the gut. More beneficial bacteria make it harder for pathogenic bacteria, such as E.Coli, to establish a foothold in the lamb's gut. **Downland Lamb Boost** is a source of energy with a prebiotic and a powerful antioxidant blend. Encouraging a healthy gut environment and lamb survival.

Environment

Prevention is better than a cure. Ensure the lambing environment is kept clean and use fresh straw. We stock a range of disinfection products to help maintain a clean environment. It is important that sterilant is applied to a surface free from muck, otherwise you will not effectively kill the pathogenic bacteria.

- **Iodine** — Ensuring Navels are double dipped with **STRONG** iodine. **Downland Iodine** is 10% strength
Talk to us about NoBACZ, an alternative to iodine for Navel protection.
- **Bactibed** — helps keep bedding dry and helps prevent the growth of potentially pathogenic bacteria such as E.Coli
- **Sterilising Fluid** — Keep bottles and tube feeders clean, as these present a huge risk for cross-contamination between lambs.
- **Blitz** — Effective against all viruses and bacteria, does not cause mis-mothering and you can re-stock immediately after use. Ideal for spraying pens between lambing. This falls under the Explosive Precursor Act, so requires a photo ID when buying for the first time.

Colostrum. 3Qs – Quality, Quantity, Quickly

Ewe's colostrum is always the best but, if the ewe isn't milky and there's none in the freezer to defrost then use **Downland Lamb Force** colostrum – knocks the socks off the competition with the highest levels of antibodies (Cambridge University trials). Feed 50mg/kg LW at birth and then every 6hrs for the first 24hrs.

Milk Powder

Quality milk powders give the best results and **Downland Lamb Force** with **Pro Zest** stands head and shoulders above the rest. Trials show a 3kg LWG advantage over well-known competitor brands: that's the benefit of using powder based on ewe's milk with added prebiotics. Feed warm or cold, by bottle or ad lib, available in conventional and freeflow versions.

Recorded Lambing Webinars

We have had some great webinars recorded on our YouTube channel, including Dr Alision Bond talking about Pre Lambing Nutrition and Lamb Shed Management : www.youtube.com/@rmjones

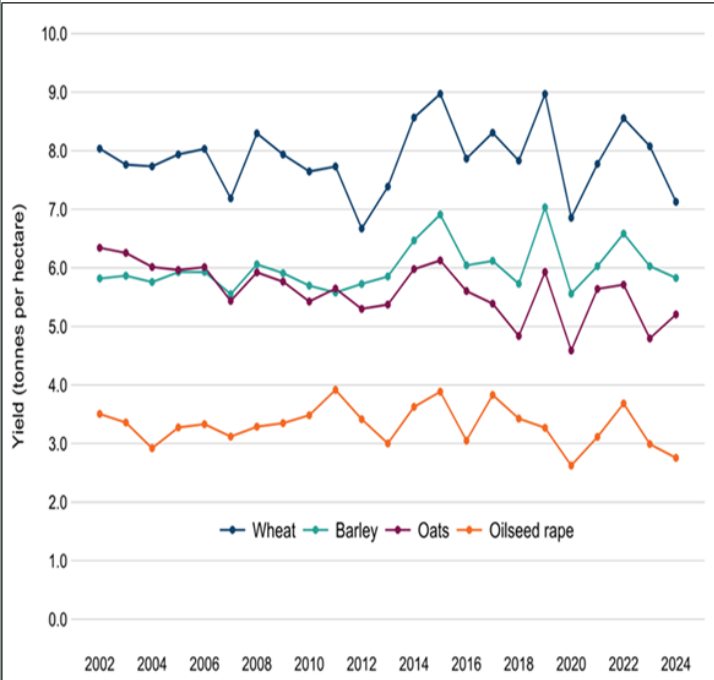
*Source: Shiels et al 2018

Arable Update – January

UK LIFFE Wheat Jan25 £175- £180/t
MATIF OSR Jan25 £360 - £380/t
AN34.5% Fertiliser £335- £340/t

Current wheat GS GS11-GS22
Current OSR GS GS20-25

Industry Data – DEFRA provisional end of year crop production data



- All the main cereal crops and oilseed rape saw reductions in yields in 2024 compared to 2023 except for oats which saw an 8.5% increase. Overall yields were down on the five-year average.
- The provisional estimate of the 2024 English wheat harvest is 10.0 million tonnes, a decrease of 22% on 2023. This is due to decreases in both yield and area.
- The provisional estimate of the 2024 English barley harvest is 4.9 million tonnes, an increase of 2.7% on 2023. This comprises a 26% decrease in winter barley production offset by a 41% increase in spring barley.
- Oat production increased by 20% to 773 thousand tonnes in 2024, due to an 11% increase in area and an 8.5% increase in yield.
- Oilseed rape production is estimated to have fallen by 33% to 687 thousand tonnes in 2024. This was driven by a 27% decrease in area and a 7.9% decrease in yield.

Gross Margin Projections—Harvest 2025

Crop	W Wheat	W Barley	W Oats	S Barley	S Oats	OSR	Maize
Yield t/ha	9	8	7	7	6	4	43
Value £/t	£ 185.00	£ 165.00	£ 145.00	£ 155.00	£ 145.00	£ 380.00	£ 38.00
Output £/ha	£ 1,665.00	£ 1,320.00	£ 1,015.00	£ 1,085.00	£ 870.00	£ 1,520.00	£ 1,634.00
Variable Costs £/ha	£ 584.00	£ 604.00	£ 449.00	£ 492.00	£ 397.00	£ 644.00	£ 670.00
Gross Margin £/ha	£ 1,081.00	£ 716.00	£ 566.00	£ 593.00	£ 473.00	£ 876.00	£ 964.00

Comment

No task lists for this month. Hopefully the weather will be relatively benign and create a good start for the spring ahead.

Few reminders;

- We have NROSO talks for sprayer operators on the 15th and 29th January.
- 16th January we have a Lamb Milk evening at Craswall. Get in touch for more details
- We have spring seed available including maize, cereals, beet, forage brassicas and grass seed – more in the next newsletter
- The fertiliser market is relatively flat at the moment – it may be worth taking some cover for the season ahead.